

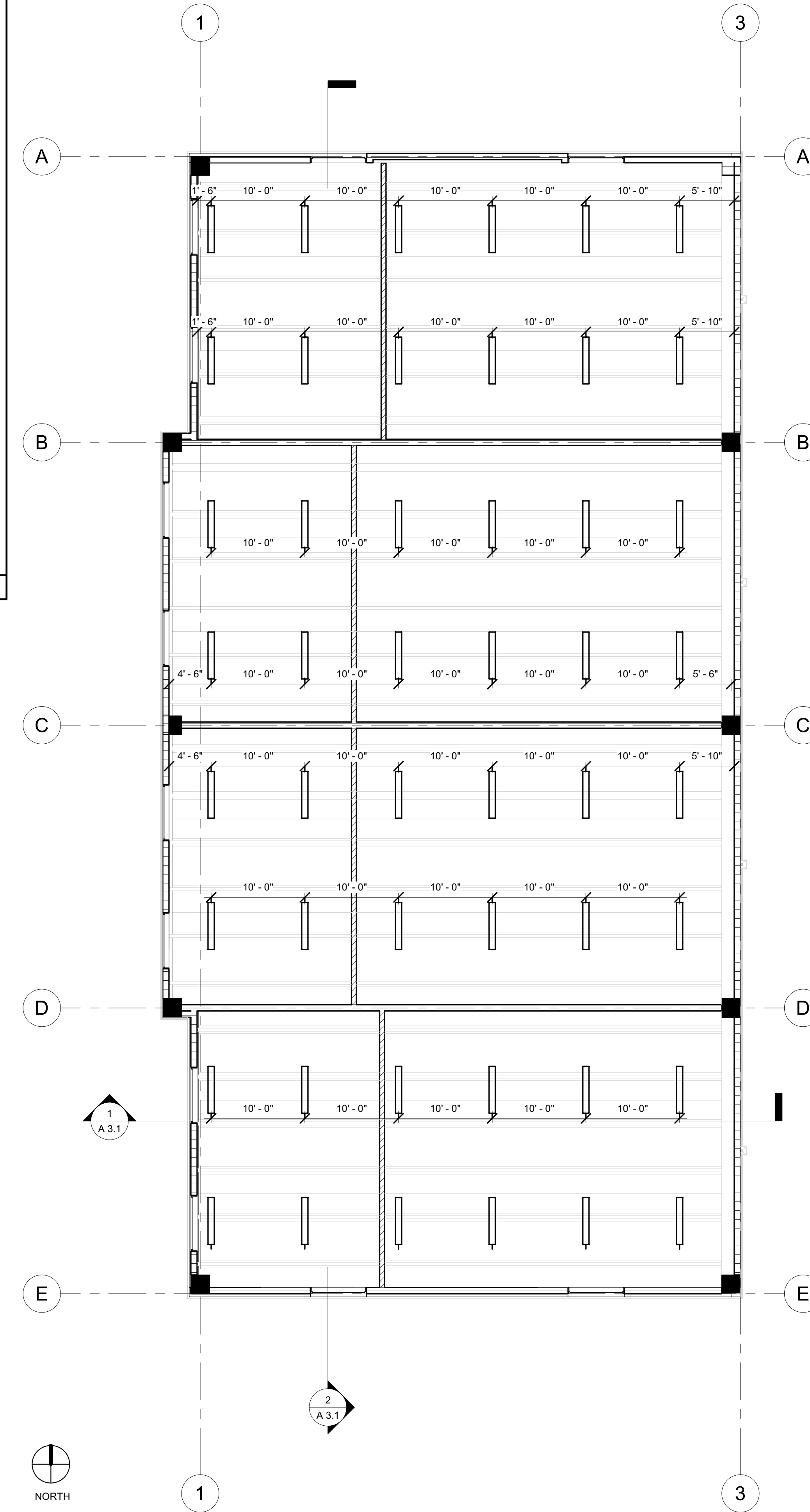
DRC

PZ23-12000055
08/21/2024



- ELECTRICAL SYMBOLS
- DUPLEX RECEPTACLE 15 AMP/120 VOLT
 - DUPLEX RECEPTACLE 15 AMP/120 VOLT
 - G.F.I. RECEPTACLE 15 AMP/120 VOLT
 - QUAD RECEPTACLE 15 AMP/120 VOLT
 - SINGLE RECEPTACLE 20 AMP/120 VOLT
 - EQUIPMENT RECEPTACLE 15 AMP/120 VOLT
 - SWITCH, THREE-WAY 15 AMP/120 VOLT
 - SWITCH, MOTOR RATED 15 AMP/120 VOLT
 - SWITCH, FAN DIMMER 120 VOLT RHEOSTAT
 - DOOR JAMB LIGHT SWITCH
 - TELEPHONE OUTLET
 - DATA/PHONE OUTLET
 - TELEVISION OUTLET
 - D.S.S. SATELLITE OUTLET
 - KEYPAD, LOW VOLTAGE CONTROL
 - DISCONNECT
 - SMOKE DETECTOR
 - MOUNT 12" A.F.F. UNLESS OTHERWISE NOTED
 - VERIFY MOUNTING HEIGHT
 - MOUNT 12" A.F.F. UNLESS OTHERWISE NOTED
 - VERIFY MOUNTING HEIGHT
 - MOUNT 18" A.F.F. UNLESS OTHERWISE NOTED VOLTAGE AND AMPACITY AS PER PLANS
 - MOUNT 44" A.F.F. UNLESS OTHERWISE NOTED
 - MOUNT 44" A.F.F. UNLESS OTHERWISE NOTED
 - RATED FOR USE WITH TOTAL MOTOR LOADS
 - SIZE DIMMER WITH TOTAL MOTOR LOAD
 - VERIFY EXACT MOUNTING HEIGHT, DOOR SWING AND LOCATION
 - DOOR CHIME
 - RECESSED LIGHT FIXTURE
 - SURFACE MOUNTED CEILING FIXTURE
 - TRACK LIGHT, LENGTH TO SCALE WITH PLANS
 - FLOURESCENT FIXTURE, LENGTH TO SCALE WITH PLANS
 - PENDANT MOUNTED FIXTURE, PROVIDE BRACING
 - WALL MOUNTED FIXTURE
 - LANDSCAPE LIGHTS
 - OUTDOOR FLOOD LIGHTS, 100 WATT PAR38 LAMPS
 - MOTOR / FAN
 - CEILING FAN
 - DOORBELL
 - EXIT SIGN WITH EMERGENCY LIGHT ABOVE EXIST DOOR TO REMAIN.
 - ACOUSTICAL CEILING GRID & TILE.
 - DENOTES NEW DRYWALL CEILING.
 - LIGHT FIXTURE PER BANK STANDARD
 - DENOTES FLOOR OR ROOF MOUNT
 - DENOTES CEILING MOUNT
 - LOW VOLTAGE ZONE DESIGNATION AT LUTRON SYSTEM PANEL

3 ELECTRICAL SYMBOLS



2 2ND FLOOR PLAN (+10'-8")
1/8" = 1'-0"

LRA Architects, Inc.
ARCHITECTURE & PLANNING
9000 SHERIDAN STREET ST. 158
PEMBROKE PINES, FL 33024
(OFF.) - 305-403-7926
(CELL) - 786-543-0851
E-MAIL: LUAROSA@LRAARCHITECTS.COM
Luis La Rosa -Registered Architect
Architect No. 0017852
FLA

Revision		
REV	DATE	BY

PROPOSED WAREHOUSE FOR:
REGANZANI GROUP LLC
VACANT PROPERTY, SW 3RD STREET,
POMPANO BEACH, FL, 33069

SEAL: AS 0117852
Luis La Rosa
Digitally signed by Luis La Rosa.
Date: 2024.05.29 17:39:14 -0400

DRAWN:	Author
CHECKED:	Checker
DATE:	11/07/2023
SCALE:	AS NOTED
JOB. NO.:	023-042
SHEET:	
OF:	
SHEETS:	

100% CONSTRUCTION DOCUMENTS
5/29/2024 3:35:44 PM

1/8" = 1'-0"